

**BONTRAGER****WHEEL SPECIFICATIONS**

Line Comp 30 Rear TLR Disc 29 Boost

**Wheel Components**

TCG Part Number	Description
5254022	Wheel
NA	Hub - 108T (OE use only, not available for aftermarket purchase)
5268671	Rim
W438581	Drive Side Spokes
W438582	Non-Drive Side Spokes
415761	Nipples
W439598	Tubeless Rim Strip
W527257	Tubeless Valve Stem

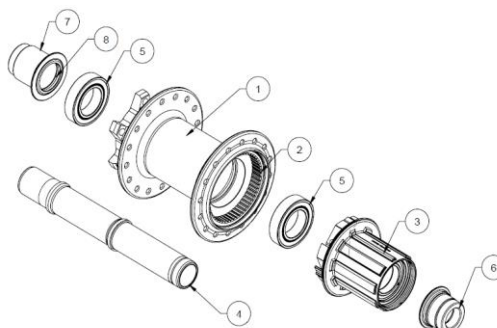
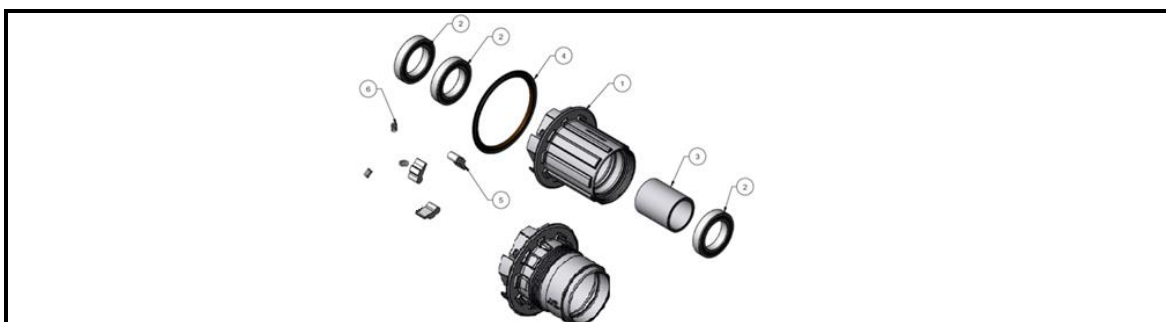
**Hub Service Parts**

Diagram Number	TCG Part Number	Description
1	NA	Hub Shell
2	W527053	Drivering
3	See Freehub Parts (below)	Freehub
4	W542541	Axle
5	432399	Ball Bearing 6903 30x17x7mm
6	552406	12mm End Cap (Drive Side)
7	552407	12mm End Cap (Non-Drive Side)
Not Shown	W562022	QR End Cap (Non-Drive Side conversion to 141x5mm)
Not Shown	W527033	QR End Cap (Drive Side conversion to 141x5mm with Shinano HG or SRAM XD)
Not Shown	W5255095	QR End Cap (Drive Side conversion to 141x5mm with Shinano Micro Spline)
Not Shown	W586894	Micro Spline 12mm End Cap (Drive Side)
8	Included w/End Cap	End Cap O-ring



Freehub Parts

Diagram Number	TCG Part Number	Description
1	552410	Shimano Compatible Freehub (includes Bearings, Spacer, & Freehub Seal - Pawls & Springs sold separately)
	552411	SRAM XD Driver (includes Bearings, Spacer, & Freehub Seal - Pawls & Springs sold separately)
Not Shown	600718	Shimano Micro Spline Freehub - requires Micro Spline-specific end cap (includes Bearings, Spacer, and Freehub Seal)
2	410428	Freehub Bearings
3	included w/freehub body	Freehub Bearing Spacer
4	included w/freehub body	Freehub Bearing Seal
5	552414	Pawls - 3 pack (Freehub requires 1 kit for 54 points of engagement & 2 kits for 108)
6	552415	Springs - 3 pack (Freehub requires 1 kit for 54 points of engagement & 2 kits for 108)

Wheel Building Information and Specifications

Value	Description or Specification
Wheel Building Information	
0.5	Hop (mm)
0.5	Wobble (mm)
NA	Wheel stress level right side up (degrees of rotation, measured on Bontrager Stressor)
NA	Wheel stress level left side up (degrees of rotation, measured on Bontrager Stressor)
1.0	Dish (mm) - Maximum gauge reading (First side rim to endcap minus second side rim to end cap)
195 lbs min, 325 lbs max OR 87 kgf min, 148 kgf max	Spoke tension - drive side
Lacing pattern non-disc side	2 cross, woven. First hole CCW from valve hole is a pushing spoke (viewed from the non-disc side).
Lacing pattern disc side	2 cross, woven. First hole CCW from valve hole is a pulling spoke (viewed from the disc side).
Size Specifications	
285mm	Spoke length drive
286mm	Spoke length non-drive
608mm	Rim ERD
20mm	Rim height
33mm	Rim outer width
28.5mm	Rim hook bead width
NA	Rim spoke offset
Other Specifications	
1035g	Wheel weight
Black/Black/Black	Wheel color
Black	Hub color
Black	Spoke color
Black/Anthracite	Rim color
28	Spoke count
14G	Spoke gauge
6-Bolt	Disc bolt pattern
Yes	Tubeless ready

I

